

# DREDGING AND MARINE CIVIL



**HALL**

[hallcontracting.com.au](http://hallcontracting.com.au)



**AUSTRALIA'S  
LARGEST PRIVATELY  
OWNED DREDGING  
CONTRACTOR**  
working across South-East  
Asia, Australia and the  
Pacific Islands

**TRUSTED.  
CAPABLE.  
AUSTRALIAN.**



# **AT HALL** WE GO MORE THAN JUST THE **EXTRA MILE.**

Since our inception in 1946, we have grown from humble beginnings to become one of the leading dredging contractors in Australia, South-East Asia and the Pacific Islands, and we are continuing to expand in the international market.

Our success is driven by our commitment to communicating transparently, working collaboratively with clients and consistently delivering practical and innovative project solutions.

Owning and operating an advanced dredging fleet, Hall Contracting is renowned for tackling challenging and remote dredging projects in the Asia Pacific region.

# TOOLS OF THE TRADE

Operating an advanced fleet of backhoe and cutter suction dredges, and backed up by a wide range of ancillary equipment including workboats, booster pumps, barges and pipelines, Hall Contracting possesses the capabilities to handle complex dredging projects across the globe.

Our relationships with other trusted dredging companies allow us to access an even wider range of equipment, including trailing suction hopper dredges.



## HALL EQUIPMENT INCLUDES:

**10** CUTTER  
SUCTION  
**DREDGES**



**2** BACKHOE  
**DREDGES**



ACCOMMODATION BARGES,  
**TUGS** & WORKBOATS



## OUR FLEET INCLUDES:

### BACKHOE DREDGES

Name	Make	Country of origin	Power (kW)	Max. bucket size
Woomera	De Donge	Netherlands	2717	18m <sup>3</sup>
Nulla Nulla	De Donge	Netherlands	1296	8m <sup>3</sup>

### CUTTER SUCTION DREDGES

Name	Make	Country of origin	Power (kW)	Pipeline diam.
Eastern Aurora	IHC	Netherlands	7457	750mm
Amity	NQEA	Australia	3314	750mm
Arnhem	Damen	Netherlands	1303	550mm
Mabuiag	IHC Beaver 1200	Netherlands	839	500mm
Saibai	Hall	Australia	895	400mm
Kikilu	Ellicott B890	USA	671	400mm
Navua	Jaden	Australia	734	400mm
Warraber	Jaden	Australia	503	400mm
Mooloolah River	Watermaster Classic V	Finland	205	250mm
Maroochy River	Watermaster Classic V	Finland	205	250mm

# OUR CAPABILITIES

With a strong and experienced senior management team leading the way, Hall possesses the capabilities and know-how to tackle some of the world's most complex and remote dredging projects.

Our fleet is equipped to dredge a variety of materials including rock, clay, sand, silt, gravel and mine tailings.

## OUR CAPABILITIES INCLUDE:

- > capital and maintenance dredging for ports and harbours
- > coastal resilience
- > land reclamation
- > dredging of canal estates
- > river dredging
- > tailings dredging and dewatering
- > marine civil





## CAPITAL AND MAINTENANCE DREDGING FOR PORTS AND HARBOURS

Our diverse fleet allows us to take on large-scale port construction and reclamation projects, including dredging channels, swing basins and berths.

### PROJECT PORTFOLIO

- > **PORT OF GLADSTONE, AUSTRALIA** Dredging 800,000m<sup>3</sup> of material from the Clinton Channel within Queensland's largest, fully operational multi-commodity port to reduce interaction between vessels.
- > **PORT OF CAIRNS, AUSTRALIA** Dredging 50,000m<sup>3</sup> of stiff clay from the Trinity Inlet shipping channel to enable superyachts and cruise ships up to 300m in length to access the port.
- > **PORT OF PORT HEDLAND, AUSTRALIA** Dredging and remediating 1.3 million m<sup>3</sup> of material to form the Lumsden Point General Cargo Facility approach channel, swing basin and berth pockets.
- > **DARWIN PORT, AUSTRALIA** Dredging the Darwin Marine Supply Base approach channel, swing basin and berth, including removal of 700,000m<sup>3</sup> of siltstone, sandstone and quartz reef.
- > **SPOILBANK MARINA, AUSTRALIA** Dredging an entrance channel for Spoilbank Marina in Port Hedland, adjacent to the world's largest bulk export port.
- > **PORT VILA, VANUATU** Dredging limestone to create a new access channel and improve navigational accessibility between South Paray Wharf and Iririki Island.
- > **PORT OF TOWNSVILLE, AUSTRALIA** Widening the Platypus Channel to enable ships up to 300m in length to access the port.

## COASTAL RESILIENCE

Hall has the equipment and experience to bolster coastal defences through beach renourishment and marine structures such as groynes, seawalls and breakwaters. The versatility of our pipeline and booster pump combinations enables us to develop bespoke solutions for a wide variety of beach erosion issues.

### PROJECT PORTFOLIO

- > **HOLLOWAYS BEACH, AUSTRALIA** Dredging 20,000m<sup>3</sup> of sand from the mouth of Richters Creek to replenish sand along Holloways Beach.
- > **ROSEBUD, AUSTRALIA** Dredging 20,000m<sup>3</sup> of material and renourishing two beaches on Victoria's Mornington Peninsula.
- > **MOOLOOLABA, AUSTRALIA** Relocating sand to restore and protect a very popular recreational cove adjacent to the Mooloolaba boat harbour.
- > **NUKUFETAU, TUVALU** Designing and constructing multiple three-metre-high seawalls totalling 950m in length to protect the Nukufetau atoll from large waves, particularly during severe weather events.
- > **FUNAFUTI, NANUMANGA AND NANUMEA, TUVALU** Delivering climate-resilient infrastructure and beach renourishment works across three atolls.



## LAND RECLAMATION

Hall possesses a solid track record in delivering land reclamation projects across the Asia Pacific, creating usable land from oceans, rivers, lagoons and harbours.

### PROJECT PORTFOLIO

- > **PORT MORESBY, PNG** Dredging 1.3 million m<sup>3</sup> of hard clay, coral rock and sand to form shipping berths, an approach channel, swing basin and reclamation for the Motukea Wharf and Container Terminal.
- > **JOHOR BAHRU, MALAYSIA** Dredging 3 million m<sup>3</sup> of sand and pumping it more than 2km to form a man-made island as part of the Forest City development.
- > **FUNAFUTI, TUVALU** Dredging sand from a nearby lagoon and using it to reclaim a 55,000m<sup>2</sup> stretch of foreshore, providing an open space for residents to participate in recreational activities.
- > **DAMPIER, AUSTRALIA** Constructing a seawall and undertaking dredging and reclamation works to form the Mermaid Marine Supply Base.

## DREDGING OF CANAL ESTATES

Hall is a leader in canal development and maintenance, having delivered works within a number of high-profile canal estates.

### PROJECT PORTFOLIO

- > **CAIRNS, AUSTRALIA** Undertaking maintenance dredging works within the Bluewater canal system, providing vessels with improved access.
- > **NEWPORT, AUSTRALIA** Undertaking maintenance dredging works within the Newport canal system, removing 30,000m<sup>3</sup> of sediment and clay.
- > **PELICAN WATERS, AUSTRALIA** Constructing canals and residential allotments while complying with strict environmental guidelines.
- > **BRIGHTWATER, AUSTRALIA** Dredging waterways and successfully managing acid sulfate soils and other sensitive environmental conditions.
- > **TWIN WATERS, AUSTRALIA** Dredging waterways and undertaking reclamation works for this iconic Queensland-based residential estate.



## RIVER DREDGING

Hall specialises in river dredging in remote locations. These projects are typically undertaken for flood mitigation or navigation purposes.

### PROJECT PORTFOLIO

- > **NADI RIVER, FIJI** Dredging 1.6 million m<sup>3</sup> of sediment for flood mitigation purposes, while also training Fijian operators, crew and government surveyors in hydrographic survey techniques.
- > **BING BONG CHANNEL, AUSTRALIA** Dredging 600,000m<sup>3</sup> of silts and clays to improve access to one of the world's largest zinc and lead mines.
- > **BA RIVER, FIJI** Dredging 450,000m<sup>3</sup> of sediment from the Ba River to reduce the effects of flooding on surrounding residents and infrastructure.
- > **COOMERA RIVER, AUSTRALIA** Dredging 140,000m<sup>3</sup> of sand and clay along a 12km stretch, with the dredged material used for land reclamation at Hope Island.
- > **NAVUA RIVER, FIJI** Dredging 500,000m<sup>3</sup> of material in just seven weeks, while managing fast-flowing river currents, sand infill and plant debris.

**STRONG.  
EXPERIENCED.  
PROFESSIONAL.**



## TAILINGS DREDGING AND DEWATERING

Hall Contracting is experienced at dredging tailings, pit dewatering and installing pipelines, having completed successful projects at various mines and large reclamation project sites.

### PROJECT PORTFOLIO

- > **RANGER MINE, AUSTRALIA** Dredging and reclaiming approximately 26.8 million tonnes of uranium tailings on behalf of Energy Resources of Australia.
- > **MORANBAH NORTH COAL MINE, AUSTRALIA** Desilting tailings dams using an innovative dewatering method, involving pumping dredged material into large geotextile tubes.
- > **FORTESCUE METALS TAILINGS POND, AUSTRALIA** Dredging more than 4.5 million m<sup>3</sup> of material in a highly regulated environment, achieving zero harm over the entire project.
- > **OAKY CREEK COAL MINE, AUSTRALIA** Removing coal fines from a tailings dam for Xstrata in a highly regulated safety environment, while interfacing with an operational underground coal mine.
- > **MAP TA PHUT, THAILAND** Using two dredges to remove mud and silts from existing ponds on the site of the future Bountiful City Light & Power station.
- > **ENSHAM COAL MINE, AUSTRALIA** Large-scale pit dewatering of the Ensham coal mine following the 2011 floods.





## MARINE CIVIL

With expertise in sheetpiling as well as building seawalls, groynes, lock and weir structures, wharves, jetties and salinity exchange systems, Hall is capable of delivering a wide variety of marine infrastructure.

### PROJECT PORTFOLIO

- **NEWPORT, AUSTRALIA** Constructing a concrete lock and weir, including dry excavation and dredging works.
- **PELICAN WATERS, AUSTRALIA** Constructing two concrete lock and weir structures and a salinity exchange system.
- **ATAFU, NUKUNONU AND FAKAOFO, TOKELAU** Constructing four wharves, upgrading various ramp structures and widening and deepening reef passages to ensure safer, more reliable ship-to-shore operations.
- **BRIGHTWATER, AUSTRALIA** Constructing Brightwater Lake and associated infrastructure, including over 4km of revetment walls, a culvert structure, concrete weir, salinity pumping system and intake structure with a jetty.
- **YORKEYS KNOB, AUSTRALIA** Constructing a recreational boat-launching facility including a six-lane boat ramp, two breakwaters, a car park and two large culvert structures.
- **MAROOCHYDORE, AUSTRALIA** Constructing four groyne structures and a 355m seawall.
- **NUI, TUVALU** Constructing a new boat harbour including a wharf, navigational channel, boat ramp, community building and shoreline reclamation.

**AT HALL** WE GO MORE THAN  
JUST THE **EXTRA MILE.**

# THE HALL WAY

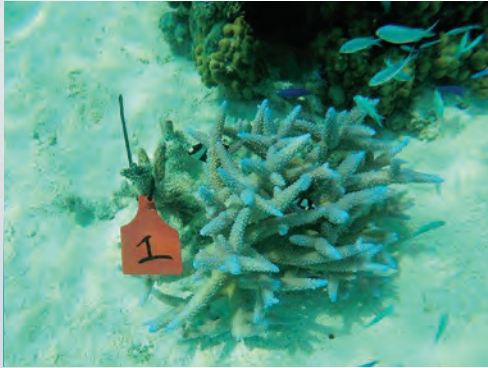
At Hall, we pride ourselves on our ability to deliver practical solutions to problems, and have proven expertise in overcoming challenges posed by complex projects. Most importantly, we value our client relationships and work hard to deliver our service in a cooperative manner. Our frameworks for safety, sustainability and quality assurance are essential to our success.

**SAFETY** Every person who works with Hall is considered a part of the extended family. Our top priority is ensuring staff members always return home safely and injury free. We operate a safety management system to AS/NZS 4801 and ISO 45001 (accredited by Bureau Veritas) to help us achieve our goal of zero harm, and we continually strive to improve our safety procedures.

**ENVIRONMENT** Hall is renowned for its environmentally conscious approach to projects, with our commitment to environmentally responsible contracting at the forefront of everything we do. We make every effort to carry out development projects in a responsible manner to minimise impact on the environment, and we are proud to operate an environmental management system accredited to ISO 14001.

**QUALITY** Quality is more than just delivering an outstanding project; it's a way of life. With quality one of Hall's core values, our team endeavours to incorporate quality controls into all facets of the business. We operate a quality management system to ISO 9001, which is accredited by Bureau Veritas, and our corporate culture embodies a strong belief in providing only first-rate service.





**ENVIRONMENT**

**RESPECT**

FOR THE EARTH



**SAFETY**

**CARE**

FOR OUR PEOPLE



**QUALITY**

**PRIDE**

IN OUR PRODUCT



**SAFE. SUSTAINABLE. QUALITY.**



**AUSTRALIA OFFICE**

149 Sippy Downs Drive (PO Box 519),  
Buderim QLD 4556, Australia  
Phone +61 (7) 5445 5977 Fax +61 (7) 5445 1312

Offices located in:  
**SUNSHINE COAST, AUSTRALIA**  
**BRISBANE, AUSTRALIA**  
**KUALA LUMPUR, MALAYSIA**  
**NADI, FIJI**  
**ANTWERP, BELGIUM**

[mail@hallcontracting.com.au](mailto:mail@hallcontracting.com.au)  
[www.hallcontracting.com.au](http://www.hallcontracting.com.au)



[hallcontracting.com.au](http://hallcontracting.com.au)